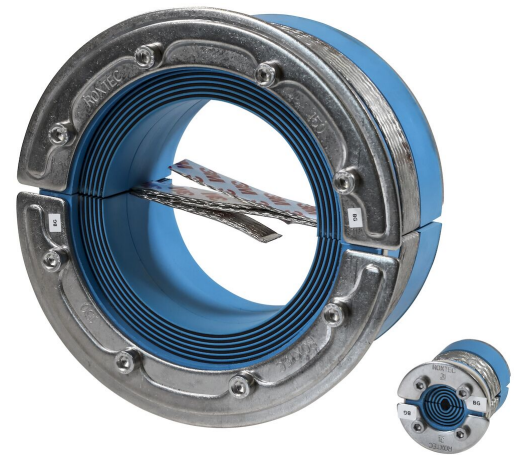




# Sello Roxtec RS BG™

Sello de entrada para equipotencialidad y puesta a tierra de un solo cable o tubería.

El sello Roxtec RS BG™ para cables individuales armados o con revestimiento de metal o para tuberías metálicas es ideal para aplicaciones con puesta a tierra o equipotencialidad y que requieran resistencia al fuego y estanqueidad.



- Resistente a roedores

## Características del producto



Calificación contra incendios



Estanco al agua



Estanco a gases



Seguridad eléctrica

## Estructura de instalación



Metal

## Tipo de montaje



Manguito existente

## Calificaciones y certificados

### Fuego

- CLASE A de acuerdo al estándar FTP IMO 2010

### Estanqueidad

- Gas: 2 bar (catastrófico)
- Agua: 4 bar (catastrófico)

### Soportes

- Equipotencialidad y toma de tierra

## Datos de los componentes de sellado

### Componentes de sellado



Sello RS BG™



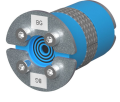
Lubricante Roxtec

Para obtener información detallada, visite [roxtec.com](https://www.roxtec.com).

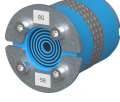


# Kits de sellos preconfigurados

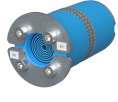
mm/kg



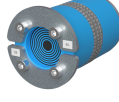
RS 25 BG AISI316



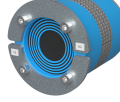
RS 31 BG AISI316



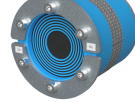
RS 43 BG AISI316



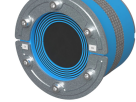
RS 50 BG AISI316



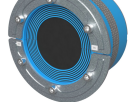
RS 68 BG AISI316



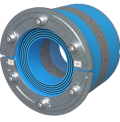
RS 75 BG AISI316



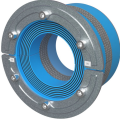
RS 100 BG AISI316



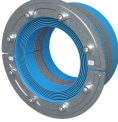
RS 125 BG AISI316



RS 100 BG AISI316  
WOC



RS 125 BG AISI316  
WOC



RS 150 BG AISI316  
WOC

Título	Configuración	Dimensiones de abertura Ø	Peso	N.º de art.
RS 25 BG AISI316	1x (3.6-12.0)	25 - 26	0.09	164758
RS 31 BG AISI316	1x (4.0-17.0)	31 - 32	0.08	164773
RS 43 BG AISI316	1x (4.0-23.0)	43 - 45	0.26	164774
RS 50 BG AISI316	1x (8.0-30.0)	50 - 52	0.34	125982
RS 68 BG AISI316	1x (26.0-48.0)	68 - 70	0.6	164776
RS 75 BG AISI316	1x (24.0-54.0)	75 - 77	0.7	164777
RS 100 BG AISI316	1x (48.0-70.0)	100 - 102	1.2	164778
RS 125 BG AISI316	1x (66.0-98.0)	125 - 127	1.7	164779
RS 100 BG AISI316 WOC	1x (48.0-70.0)	100 - 102	1	182934
RS 125 BG AISI316 WOC	1x (66.0-98.0)	125 - 127	1.5	190074
RS 150 BG AISI316 WOC	1x (93.0-119.0)	150 - 152	1.8	164780

The product information provided by Roxtec does not release the purchaser of the Roxtec system, or part thereof, from the obligation to independently determine the suitability of the products for the intended process, installation and/or use.

Roxtec gives no guarantee for the Roxtec system or any part thereof and assumes no liability for any loss or damage whatsoever, whether direct, indirect, consequential, loss of profit or otherwise, occurred or caused by the Roxtec systems or installations containing components not manufactured by an authorized manufacturer and/or occurred or caused by the use of the Roxtec system in a manner or for an application other than for which the Roxtec system was designed or intended.

Roxtec expressly excludes any implied warranties of merchantability and fitness for a particular purpose and all other express or implied representations and warranties provided by statute or common law. User determines suitability of the Roxtec system for intended use and assumes all risk and liability in connection therewith. In no event shall Roxtec be liable for indirect, consequential, punitive, special, exemplary or incidental damages or losses.

The Roxtec products are offered and sold in accordance with the conditions of the Roxtec General Terms of Sales. The latest version of the Roxtec General Terms of Sales can be downloaded from <https://www.roxtec.com/en/about-us/about-roxtec/general-terms-of-sales/>

We reserve the right to make changes to the product and technical information without further notice. Any errors in print or entry are no claims for indemnity. The content of this publication is the property of Roxtec International AB and is protected by copyright.

This document was generated on: 2024-04-16